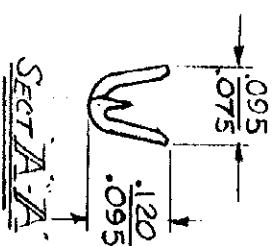
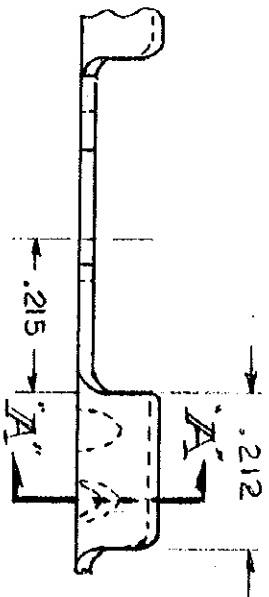
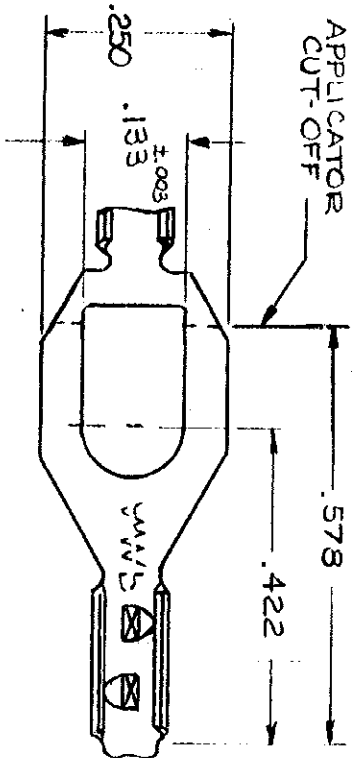


NUMBER
61498

S.



CONTINUOUS STRIP ON REELS

MATERIAL & FINISH	TERMINAL NUMBER
.016-BRASS - NONE	61498-1
.016-BRASS - TIN	61498-2
.016-BRASS - PRE-TIN	61498-3

DIMENSIONS IN INCHES. DO NOT SCALE PRINT.

REVISION	DATE	BY	CHK
A	6/14/65	47	50
B	4-34-70	47	50
C	REVISED	AC 1089	55

©1965 BY AMP INCORPORATED. ALL RIGHTS RESERVED. AMP PRODUCTS COVERED BY PATENTS AND/OR PATENTS PENDING.

CUSTOMER COPY
REFERENCE ONLY



AMP INCORPORATED
HARRISBURG, PENNA.

WIRE RANGE — INSULATION #26-#22 AWG
TOLERANCE EXCEPT AS NOTED ± .015

CLASS _____
TYPE _____
LOC. NO. A 61498
INSULATION PIERCING